

# Product catalogue

## 产品目录



## Top quality at source

Patel and Vallmeat are the apex of the integrated pork production structure of the Vall Companys Group. A vertical system that begins on our more than 2,600 farms and continues in our 4 state-of-the-art meat plants, equipped with the latest slaughter, cutting and packaging technologies. The result is meat with all the guarantees of quality, traceability and food safety: maximum confidence for the most demanding markets.



**AI centres**  
人工授精中心



**Animal breeding**  
动物饲养



**Animal nutrition**  
动物营养



**Animal welfare**  
动物福利



**Animal transport**  
动物运输



**Meat processing plants**  
肉类加工厂



**Packaging and distribution**  
包装和分销



## 始自源头的顶级品质

Patel和Vallmeat是Grupo Vall Companys集团综合猪业结构的巅峰。这个垂直化的系统从我们2600多个养殖场开始，还包括配备有最新屠宰、分割和包装技术的4个最新一代的肉类加工厂。其成果是具有全部质量、可追溯性和食品安全保证的肉品：为最苛刻的市场提供最大的信任度。



1

**Climate and circularity**  
气候和循环性



2

**Animal welfare**  
动物福利



3

**People**  
人员



4

**Quality, safety and innovation**  
质量、安全和创新



5

**Ethical and responsible management**  
道德和负责任的管理



# PENTA

PROGRAMME

## We care

Animal welfare and sustainability are two basic factors in our activities. For this reason, we certify the best conditions for our animals with the IAWS and Welfair certification, and we build a better future for pig farming with our strategic sustainability plan: the Penta Programme.

## 我们真的关心

动物福利和可持续性是我们业务的核心。为此我们通过IAWS和Welfair标志证明我们的动物享有最佳条件，并通过我们的可持续发展战略计划即Penta计划为养猪业打造更好的未来。

# Pork cutting

## 猪肉部位



Pork leg  
猪腿



Pork shoulder  
猪肩



Pork belly  
五花



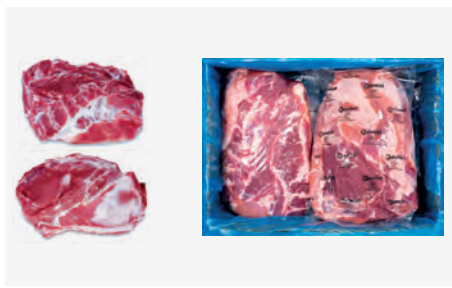
Chops & loins  
猪排



Pork trimming  
猪肉修整



Others  
其他



**1101C**  
Boneless collar  
猪去骨颈肉



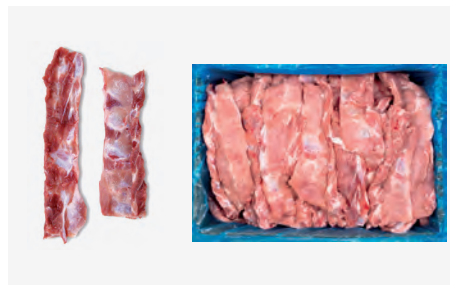
**1200C**  
Boneless skin less loin  
猪去骨去皮里脊



**1400C**  
Loin ribs  
猪背排



**1402C**  
Single rib bones  
猪排 (块切的)



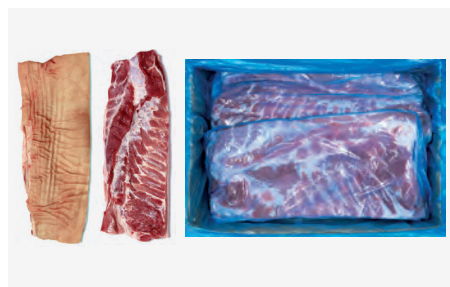
**1501C**  
Flat bones  
猪平骨



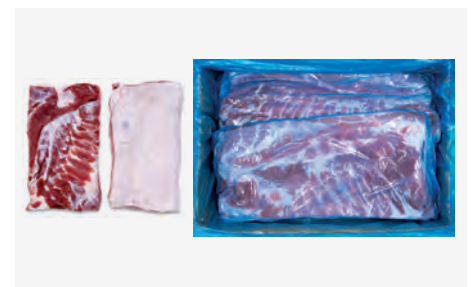
**1503C**  
Meaty Neck bones  
猪多肉颈骨



**1600C**  
Back rinds  
猪背皮

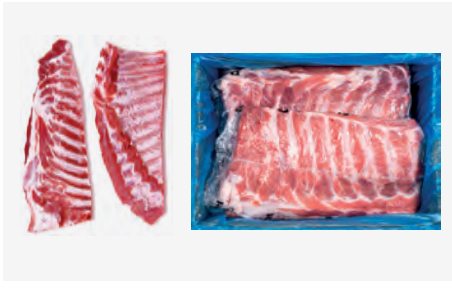


**2111C**  
Boneless skin on belly  
猪去骨带皮五花肉



**2113C**  
Boneless skin less belly  
猪去骨去皮五花肉

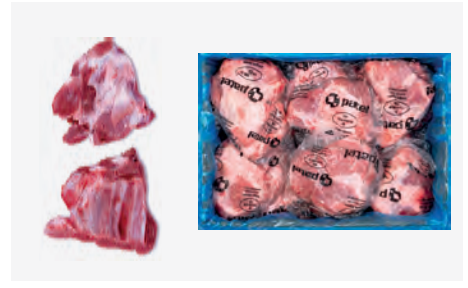




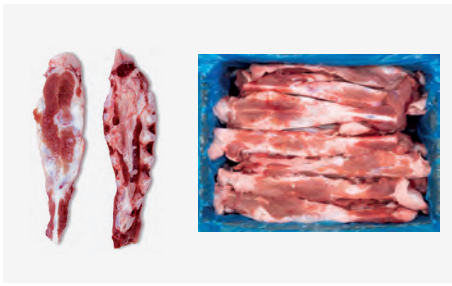
**2300C**  
Spare rib  
猪肋排



**2301C**  
Spare rib with riblet  
猪肋排带小排



**2303C**  
Riblet  
猪小排



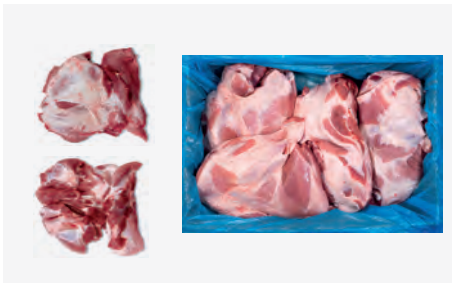
**2400C**  
Sternum  
猪胸骨



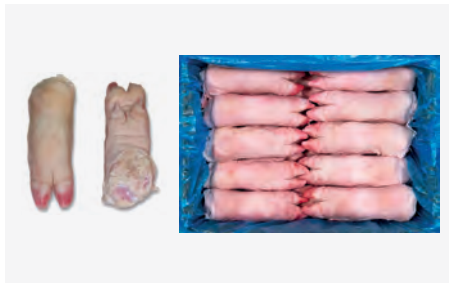
**2402C**  
Back bones  
猪脊骨



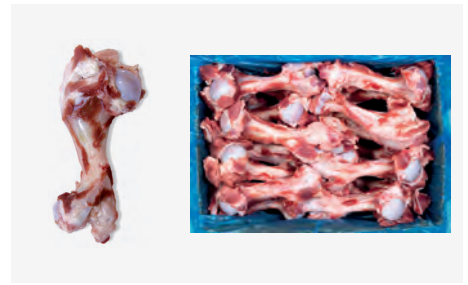
**2511C**  
Belly rinds  
猪肚皮



**3220C**  
Boneless 4D shoulder  
猪去骨4D前腿肉



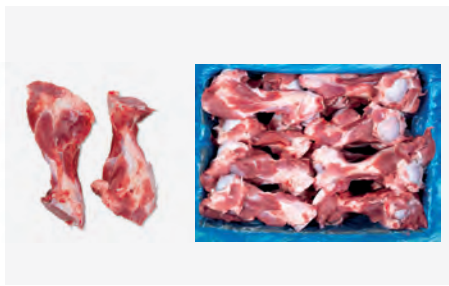
**3300C**  
Front feet  
猪手



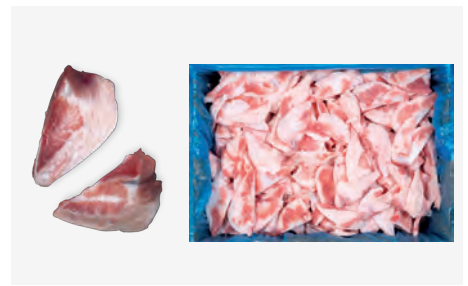
**3303C**  
Humerous  
猪肱骨



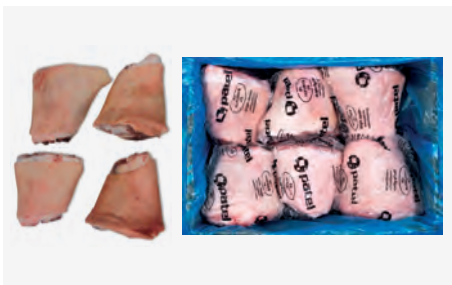
**3313C**  
Meaty blade bone  
猪多肉板骨



**3315C**  
Meaty humerus bones  
猪多肉肱骨



**3600C**  
Moon bone  
猪月亮骨



**3302C**  
Front hock  
猪前腿肘子

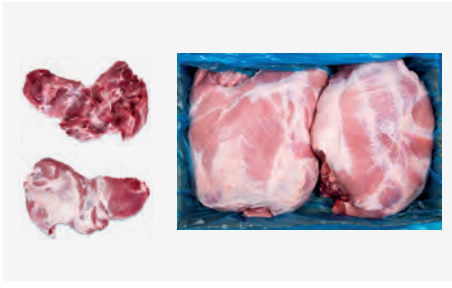


**4100C**  
Bone in foot on leg 13+  
猪13+后腿脚骨

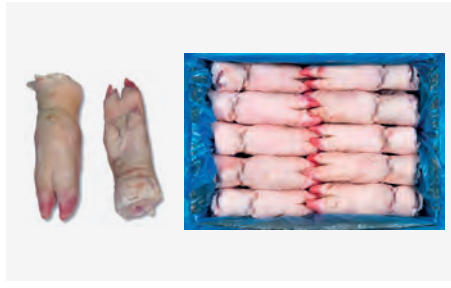


**4101C**  
Bone in leg 13 kg+  
猪13公斤+后腿骨





**4620C**  
Boneless leg 4D  
猪去骨4D后腿肉



**4701C**  
Hind feet  
猪脚



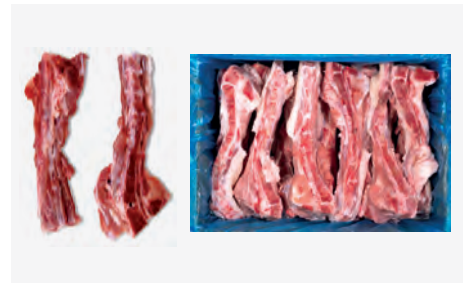
**4715C**  
Knuckle  
猪脚圈



**4720C**  
Hind Hocks  
猪后肘子



**4801C**  
Tail bone with tail  
猪尾骨带尾巴



**4803C**  
Tail bone  
猪尾骨



**4804C**  
Femur bone  
猪后腿骨



**4806C**  
Leg bones two joint  
猪后腿骨双节



**4807C**  
Hip Bones  
猪叉骨



**4809C**  
Meaty hip bones  
猪多肉叉骨



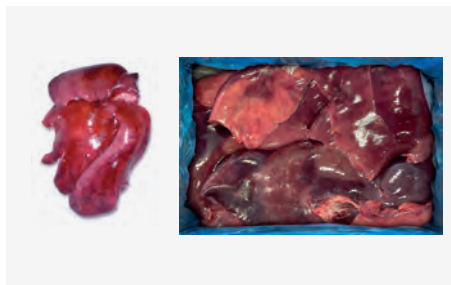
**4810C**  
Meaty leg bones  
猪多肉后腿骨



**5101C**  
Back fat  
猪背膘



**5303C**  
Cutting fat  
猪碎膘

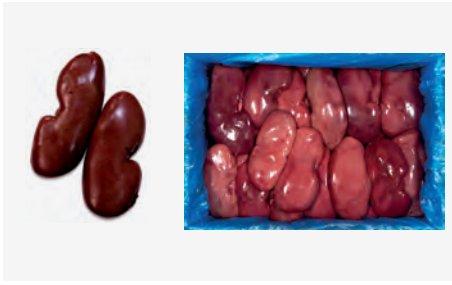


**6000C**  
Liver  
猪肝

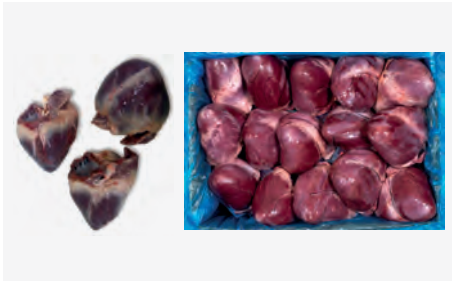


**6002C**  
Diafrghm  
猪横隔膜

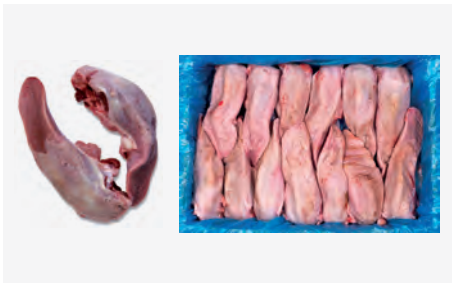




**6003C**  
Kidney  
猪肾



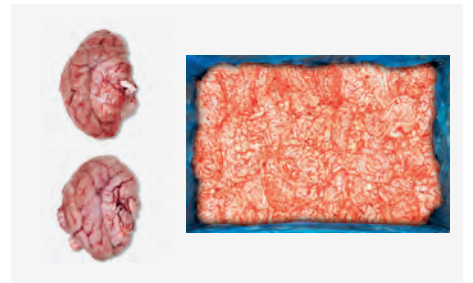
**6004C**  
Hearts  
猪心



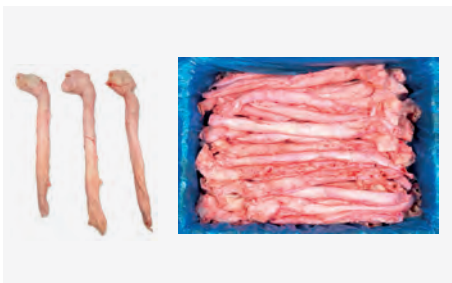
**6005C**  
Tongues  
猪舌



**6012C**  
Flare fat  
猪板油



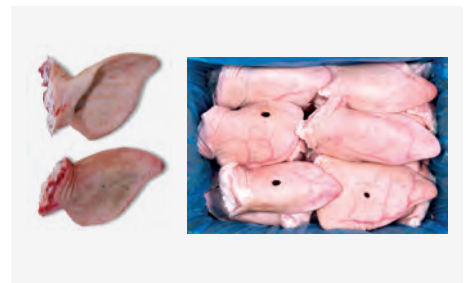
**6020C**  
Brains  
猪脑



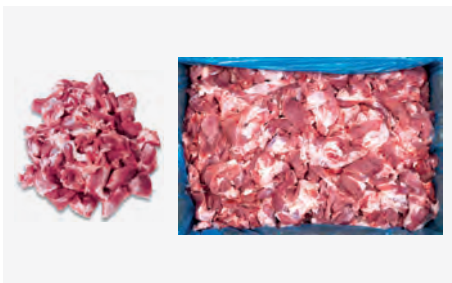
**6023C**  
Aorta  
猪心管



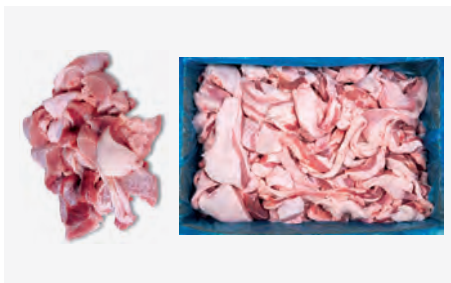
**8008C**  
Heads  
猪头



**8102C**  
Ears  
猪耳



**9002C**  
Trimming 80% lean  
猪80%精猪碎肉

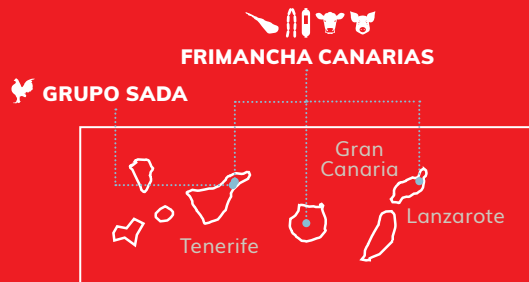


**9005C**  
Trimming 50% lean  
猪50%精猪碎肉



**9008C**  
30% lean meat from leg  
猪30%精腿肉





- Pork
- Chicken
- Beef
- Cured ham
- Cured and processed meats
- Flour
- Livestock production and animal feed
- Veterinary health
- Logistics and purchases



**PATEL, S.A.U.**  
1001293 厂

Ctra. Vic-Olot, km. 11  
08511 Santa Maria de Corcó - L'Esquirol  
Apdo. de Correos 270 - 08500 Vi  
Tel. +34 93 856 80 11  
sales@patel.es  
www.patel.es



**CÁRNICAS FRIVALL, S.L.**  
1015289 厂

Ctra. Nac. 420 de Cuenca a Ciudad Real, km. 426 - 16196 Villar de Olalla  
Tel. +34 96 926 80 06  
sales@frivall.es  
www.frivall.es



**CÁRNICAS CINCO VILLAS**  
1007957 厂

Pol. Ind. Valdeferrin, Parcela 7-12  
50600 Ejea de los Caballeros, Zaragoza  
Tel. +34 97 667 72 22  
sales@carnicascincovillas.com  
www.carnicascincovillas.com



**EMBUTIDOS RODRÍGUEZ, S.L.**  
1003341 厂

Ctra. LE-420, Km. 2,7  
24768 Soto de la Vega, León  
Tel. +34 98 765 41 24  
rodriguez@embutidosrodriguez.es  
www.embutidosrodriguez.es